

The organising authority for each day of racing will be
The Royal Temple Yacht Club

Ramsgate Week 2019

Cruiser Handicap Classes

RTYC Start Line

Monday 22nd – Friday 26th July 2019

SAILING INSTRUCTIONS

Version 1.1

1. RULES

1.1 The regatta will be governed by the rules as defined in The Racing Rules of Sailing and the Port of Ramsgate By-laws.

1.2 SHIPPING AND PORT REGULATIONS

1.2.1 Any boat infringing the International Regulations for Preventing Collisions at Sea or by-laws in respect of commercial shipping may be protested by the Race Committee for infringement of this requirement.

1.2.2 An engine shall be used when appropriate to avoid risk of collision with another vessel that is under way but not racing; or in grave emergency. The facts shall be reported to the RC at the finish, with written details to the race office before the protest time limit.

1.2.3 Ramsgate By-laws copy at www.ramsgateweek.com or direct link
<http://www.portoframsgate.co.uk/royal-harbour-marina/marina-services/>

2. NOTICES TO COMPETITORS

2.1 Notices to competitors will be posted on the official notice board located at Royal Temple Yacht Club's clubhouse. Notices relating to the re-scheduling of races will also be posted on the notice board near to the entrance to the Western Marina. The results office is located at Royal Temple Yacht Club's clubhouse.

The organising authority for each day of racing will be The Royal Temple Yacht Club

3. CHANGES TO SAILING INSTRUCTIONS






- 3.1 Any change to the Sailing Instructions will be posted before 0830 on the day it will take effect, except that any change to the schedule of races will be posted by 2000 on the day before it will take effect.
- 3.2 Verbal amendments to the Sailing Instructions may be advised by the Race Committee on VHF Channel 72 and flag L over H will be displayed on the aft mast of the RTYC race hut on the Eastern Pier head. Flag L over H means “there is a change to the Sailing Instructions, make radio contact if not understood”. This is in addition to the meaning of flag L in Race Signals.

4. SIGNALS MADE ASHORE

- 4.1 Signals made ashore will be displayed on the aft mast of the RTYC race hut on the Eastern Pierhead.
- 4.2 When flag AP is displayed ashore, “1 minute” is replaced with “not less than 60 minutes” in the race signal AP. This is additional to the meaning of flag AP in the Race Signals.
- 4.3 When flag Y is displayed ashore Rule 40 applies at all times while afloat. This changes the Part 4 preamble.

5. BRIEFING AND SCHEDULE OF RACES

- 5.1 There will be a competitor’s briefing for Classes 5, 6 and 7 on the quay side adjacent to the entrance to the western marina at 0930 on Monday 22nd July and for Classes 5 and 6 at 0930 on Friday 26th July on VHF Channel 77 for the Ramsgate Gold Cup.
- 5.2 Races are scheduled as follows:-

<u>Date</u>	<u>Class</u>		<u>Warning Signal</u>	<u>Races</u>
Monday 22 nd July	7 6 5		CH72 1055 (RTYC Line) 1105 (RTYC Line) 1115 (RTYC Line)	Cruiser Series Race 1
Tuesday 23 rd July	7 6 5		CH72 1055 (RTYC Line) 1105 (RTYC Line) 1115 (RTYC Line)	Cruiser Series Race 2
Wednesday 24 th July	7 6 5		CH72 1055 (RTYC Line) 1105 (RTYC Line) 1115 (RTYC Line)	Cruiser Series Race 3
Thursday 25 th July	7 6 5		CH72 1055 (RTYC Line) 1105 (RTYC Line) 1115 (RTYC Line)	Cruiser Series Race 4
Friday 26 th July	7 5 & 6		CH72 1055 (RTYC Line) 0945 (Committee Boat CH77)	Gold Cup Cruiser Series Race 5

The organising authority for each day of racing will be The Royal Temple Yacht Club

- 5.3 It is intended to allocate classes as below, although the Race Committee may, at its discretion, alter these according to the number of entries.

<u>Class</u>	<u>Type</u>	<u>Class Flag</u>
5	Fast Unrestricted cruisers with spinnakers	Numeral Pennant 5
6	Slow Unrestricted cruisers with spinnakers	Numeral Pennant 6
7	Cruisers without spinnakers	Numeral Pennant 7
8	Classic Class	Numeral Pennant 8

- 5.4 Boats are required to display their Class Flag (with a hoist of not less than 9 inches) on their backstay.

6. RACING AREAS

- 6.1 The racing areas will be between East Margate and South Foreland.

7. THE COURSES

- 7.1 The marks to be rounded and the sequence of rounding will be broadcast on VHF Channel 72 not later than 10 minutes before the first warning signal is displayed.
The rhumb line between marks may not be navigable.

8. MARKS

- 8.1 Marks are buoys in the Ramsgate Week list of marks the number and approximate position of which will form an appendix to these Sailing Instructions.

9. THE START

- 9.1 Races will be started according to rule 26, with RTYC light system below:-

<u>Signal</u>	<u>Flag and Sound</u>	<u>Minutes before starting signal</u>
Warning	Class Flag 1 light on	5
Preparatory	P,I,Z,Black flag, Z with I flag 2 lights on	4
One-minute	Announced on VHF 72 preparatory flag removed 1 light on	1
Start	light extinguished	0

- 9.2 In order to assist competitors, the Race Officer may count down the start sequence on VHF Channel 72.
- 9.3 Individual recalls will be signalled by flag X and a light remaining on with **one** additional sound signal for **Individual recalls**. **General recalls will have Two** additional sound signals and two lights remaining on. Competitors may also be advised by radio on VHF Channel 72. This changes rules 29.1.
- 9.4 The start line is an extension to seaward of the forward mast of the RTYC Race Hut, on the Eastern Pierhead next to port control, marked by an orange triangle, and the red port entry mark at the end of the southern breakwater, bounded by the outer distance mark which will be an inflatable mark which may not be positioned on the start line. In the event of the ODM being missing, a transit between the North Quern and the West Quern buoy. The Red port entry marks as the IDM.

**The organising authority for each day of racing will be
The Royal Temple Yacht Club**

- 9.5 Sail numbers of boats OCS or infringing other starting rules may be given on VHF Channel 72.
- 9.6 Classes whose warning signal has not been displayed must keep clear of the starting area and all boats whose warning signal has been made. Boats infringing this instruction may be protested by the race committee and the penalty may be DSQ.
- 9.7 A boat may use her engine or be towed in order to get to the starting area after her preparatory signal provided that, before she starts, she stops using her engine or drops her tow and then takes a penalty by promptly making one turn including one tack and one gybe.

10. CHANGE OF THE NEXT LEG OF THE COURSE

- 10.1 A change of course after the start will be broadcasted on VHF Channel 72 before the leading boat has begun the first leg affected. The new course to be sailed will be broadcasted on VHF Channel 72. This changes Rule 33.

11. THE FINISH

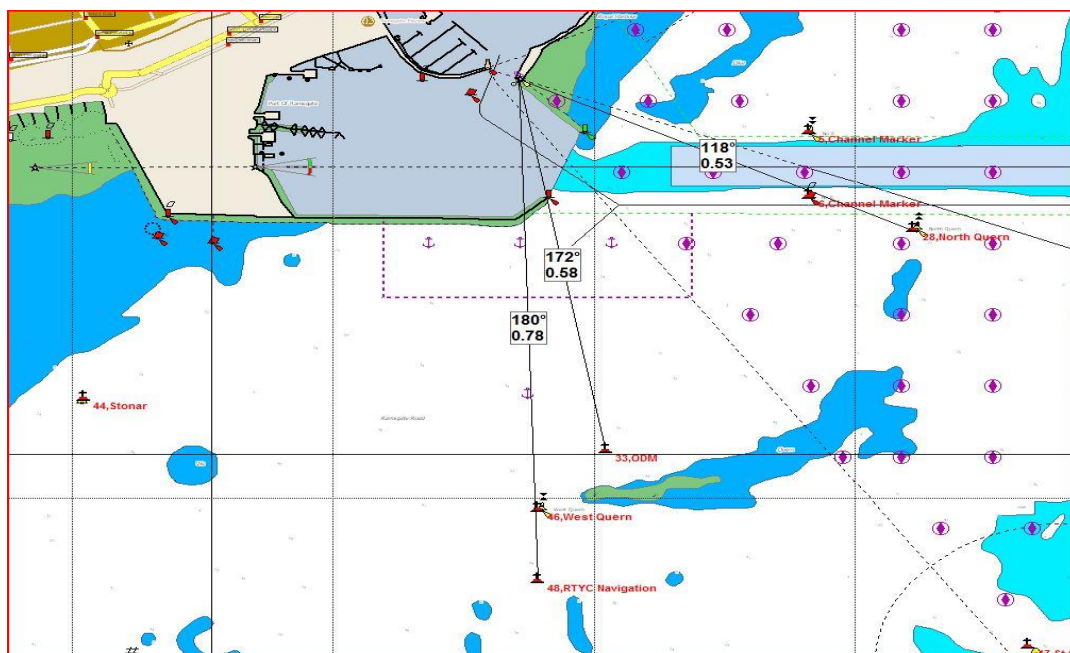
- 11.1 There will be 3 different RTYC Club Finish lines available for 2019. The line to be used will be broadcast on VHF Channel 72 with course as designated in SI 7.1 at least 10 minutes before the warning signal is displayed.

FINISH LINE A is an extension to seaward of the forward mast of the RTYC Squarehead, marked by an orange triangle, and the red port entry mark at the end of the southern breakwater, bounded by the ODM or in the event of the ODM missing a transit between the North Quern and the West Quern buoy. The Red port entry marks as the IDM.

FINISH LINE B is an extension to seaward of the forward mast of the RTYC Squarehead, marked by an orange triangle, and the West Quern Buoy bounded the Race Mark number 48, RTYC Navigation Buoy as ODM which is approx. 100 metre South of the West Quern Buoy. The West Quern Buoy acts as the IDM.

FINISH LINE C is an extension to seaward of the forward mast of the RTYC Squarehead, marked by an orange triangle, and the North Quern Buoy with the Number 6 Channel Marker acting as the IDM.

- 11.2 Boats are advised to identify themselves when approaching the finish on VHF 72.



The organising authority for each day of racing will be The Royal Temple Yacht Club

12. TIME LIMITS

- 12.1 There are no time limits and the Race Committee may shorten the course at any time and for any reason. This changes Rule 32.

13. PROTESTS AND REQUESTS FOR REDRESS

- 13.1 Protest forms are available at the race office. Protests and requests for redress or re-opening shall be delivered there within the appropriate time limit.
- 13.2 The protest time limit is 90 minutes after the last boat has finished the last race of the day.
- 13.3 A mediation system is available for protests of rules in RRS Part 2. Provided all parties to the protest agree to mediation, the procedure to be adopted is to be found in Appendix 1 to these sailing instructions.
- 13.4 Notices will be posted no later than 30 minutes after the protest time limit to inform competitors of hearings in which they are parties or named as witnesses. Hearings will be held in the protest room at Royal Temple Yacht Club's clubhouse.
- 13.5 Rule 61.1(b) is amended so that the listing of a boat on the Protest Schedule shall constitute informing the boat and the time limit is altered accordingly. It shall be the sole responsibility of the competitors to check the official notice board and to attend any protest hearing together with witnesses.
- 13.6 On the last scheduled day of racing a request for re-opening a hearing shall be delivered
- (a) within the protest time limit if the requesting party was informed of the decision on the previous day.
 - (b) no later than 30 minutes after the requesting party was informed of the decision on that day. This changes Rule 66.
- 13.7 Breaches of instructions 5.4 and 15 will not be grounds for a protest by a boat. This changes Rule 60.1(a). Penalties for these breaches may be less than disqualification if the protest committee so decides. The scoring abbreviation for a discretionary penalty imposed under this instruction will be DPI.
- 13.8 On the last scheduled day of racing a request for redress based on a protest committee decision shall be delivered no later than 30 minutes after the decision was posted. This changes Rule 62.2.

14. SCORING

- 14.1 The regatta will be scored using the Low Points system of RRS Appendix A.
- 14.2 Two races are required to be completed to constitute a series.
- 14.3 When fewer than five races have been completed, a boat's series score will be the total of her race scores.
- 14.4 When five races have been completed a boat's series score will be the total of her race scores with her worst score discarded.
- 14.5 All times will be corrected to the nearest second to determine finishing place and with a .5 seconds rounded up.
- 14.6 The Cruiser Gold Cup for Classes 5&6 on Friday 26th July will be awarded to the boat with the lowest corrected time by application of the RTYC handicap system. Info, IRC Classes and Cruiser Classes 5 and 6 will sail the same course for this race. Series scores will be unaffected by the award of this trophy.

**The organising authority for each day of racing will be
The Royal Temple Yacht Club**

15. SAFETY

- 15.1 A boat that retires from a race shall notify the race committee on VHF Marine Channel 72 or by telephone 07957 662171 as soon as possible after retirement.

16. MEASUREMENT CHECKS

A boat or equipment may be inspected at any time for compliance with class rules, if appropriate, sailing instructions and minimum Safety Equipment Rules (see Appendix 2).

17 RADIO COMMUNICATION

- 17.1 Except in an emergency, a boat shall neither make radio transmissions while racing nor receive radio communications not available to all boats. This restriction also applies to mobile telephones and other digital communication devices.
- 17.2 The race committee will use VHF Marine Channel 72 to communicate with competitors. Such communications may include sail numbers of boats recalled OCS, course changes and safety matters. Boats called by the race committee by name or sail number may respond and under such circumstances will not be in breach of instruction 17.1 Failure to broadcast by the race committee or to time it accurately or failure to receive a broadcast by the race committee will not be grounds for redress. This changes Rule 62.1(a)

18. PRIZES

Prizes will be awarded as listed in the Notice of Race.

19. RISK AND RESPONSIBILITY STATEMENT

- 19.1 Rule 4 of the Racing Rules of Sailing states "The responsibility for a boat's decision to participate in a race or to continue racing is hers alone."
- 19.2 Royal Temple Yacht Club accept no responsibility or liability for loss of life or injury to skipper or crew or others, or for the loss of, or damage to, any vessel or property.
- 19.3 The skipper and crew shall be held jointly responsible for the conduct of the boat's crew before, during and after a race. Misconduct may result in both the person in charge and crew being excluded from future races and renders a boat liable to disqualification.
- 19.4 The race committee shall make starting signals unless in their opinion it is manifestly unsafe for any of the boats entered to remain in the vicinity of the starting line. Each boat shall exercise her responsibility under Fundamental Rule 4 Decision to Race and decide whether or not to start or to continue to race.
- 19.5 No boat shall be accepted as an entry unless the skipper of the boat has, before the start of the race, signed a declaration in the terms set out in the entry form.
- 19.6 Sailing is by its nature an unpredictable sport and therefore inherently involves an element of risk. By taking part in the event, each competitor agrees and acknowledges that:
- 19.6.1 They are aware of the inherent element of risk involved in the sport and accept responsibility for the exposure of themselves, their crew and their boat to such inherent risk whilst taking part in the event;

**The organising authority for each day of racing will be
The Royal Temple Yacht Club**

- 19.6.2 They are responsible for the safety of themselves, their crew, their boat and their property whether afloat or ashore;
- 19.6.3 They accept responsibility for any injury, damage or loss to the extent caused by their own actions or omissions;
- 19.6.4 Their boat is in good order, equipped to sail in the event and they are fit to participate
- 19.6.5 The provision of a race management team, patrol boats and other officials and volunteers by the event organiser does not relieve them of their own responsibilities.
- 19.6.6 The provision of patrol boat cover is limited to such assistance, particularly in extreme weather, as can be practically provided in the circumstances;
- 19.6.7 Vessels setting to sea for offshore and coastal races are responsible for ensuring that their boat is equipped and seaworthy so as to be able to face extremes of weather; that there is a crew sufficient in number, experience and fitness to withstand such weather; and that safety equipment is properly maintained, stowed and in date and is familiar to the crew.
- 19.7 The fact that the race committee conducts inspections of a boat does not reduce the responsibilities of each competitor set out in this Notice of Race.

20. INSURANCE

Each participating boat shall be insured with insurance sufficient to meet all of any claims, and with a minimum cover of £3,000,000 (GBP) in respect of third party claims.

The organising authority for each day of racing will be The Royal Temple Yacht Club

APPENDIX 1

MEDIATION

1. After a protest has been lodged in accordance with the Sailing Instructions, all parties involved in protests alleging infringements of a rule of Part 2 shall be heard by a Mediator appointed by the Race Committee.
In exception to the above, incidents where damage or injury is involved shall not be subject to mediation, but shall be referred directly to the Protest Committee for a hearing.
2. Only one party to the protest from each boat involved, who shall have been on the boat at the time the incident occurred, shall attend the mediation hearing. No witnesses shall be allowed.
3. The mediator will have each party describe the incident, limiting each party to approximately 3 minutes. After hearing these descriptions, the mediator will offer one of the following opinions:
 - a) **No rule was broken.**
If the protesting boat accepts this opinion she can agree to withdraw the protest and the protest is then settled.
 - b) **A rule was broken by one of the boats involved.**
If that boat accepts this opinion she may accept a 40% penalty and the protest is then settled.
 - c) **Both boats broke a rule.**
If both boats accept this opinion and each agrees to accept a 40% penalty then the protest is then settled.
 - d) **The mediator is unable to offer an opinion based on the brief description given by the parties.**
4. Once the protest has been settled under 3 a), b) or c) above, the mediator shall record this on the protest form and the matter shall not thereafter be referred to the protest committee and is not subject to requests for redress, reopening or appeal by any party.
If however:
 - i) The protestor does not withdraw the protest under 3 a) above; or
 - ii) If a boat does not accept the mediator's opinion that she broke a rule under b) or c); or
 - iii) If the mediator is unable to offer an opinion under d), the protest shall be submitted to the protest committee for a hearing.
5. If the mediator's opinion is not accepted, there shall be no further discussion of the incident with the parties and the testimony given at the mediation hearing shall remain confidential and shall not be discussed with any person prior to the protest hearing.
6. If one party fails to attend, the mediation may still be heard in line with RRS 63.3 (b).
7. Application of the 40% penalty shall be calculated in accordance with Rule 44.3, except that the penalty is modified to read 40%.

**The organising authority for each day of racing will be
The Royal Temple Yacht Club**

APPENDIX 2

ROYAL TEMPLE YACHT CLUB

Minimum Safety Equipment Rules for all Classes

- 1. Buoyancy**
Boats shall either be self-righting from 60 degrees or have enough reserve buoyancy to support the boat and crew for at least 30 minutes following a capsize. Boats shall be equipped with suitable means for bailing or pumping.
- 2. Flares**
Boats shall carry, in a waterproof pack, at least two red hand flares and two orange smoke flares.
- 3. Fire Extinguisher**
Boats carrying engine or cooking fuel shall carry a fire extinguisher and a stout bucket of 9 litres minimum capacity attached to a lanyard.
- 4. Personal Buoyancy and Man Overboard**
 - 4.1 Boats **without** lifelines or with lifelines which do not meet World Sailing 2018-2019 Offshore Special Regulations (Section3), shall have personal buoyancy for each crew member at least sufficient to comply with RRS 40. Personal buoyancy shall be worn by all crew members at all times whilst racing.
 - 4.2 Boats **with** lifelines will comply with World Sailing 2018-2019 Offshore Special Regulations (Section3), shall carry personal buoyancy or lifejackets for each crew member. Boats shall also carry a rescue quoit or throw bag with at least 15m of floating line and at least one lifebuoy or life sling.
- 5. First Aid**
Boats shall carry a waterproof first aid pack with instructions.
- 6. Anchor**
Boats shall carry a suitable anchor and sufficient warp to hold the boat in 15m depth of water in the expected racing conditions.
- 7. Compass**
Boats shall carry a suitable compass – handheld is acceptable.
- 8. Equipment**
All equipment, fittings and engines shall be securely fastened.
- 9. Propulsion**
A means of propulsion, other than the boat's sails, is to be provided.
- 10. Communication**
Fixed or handheld VHF must be carried at all times capable of transmitting and receiving Channels 16, 14, 72, 77.